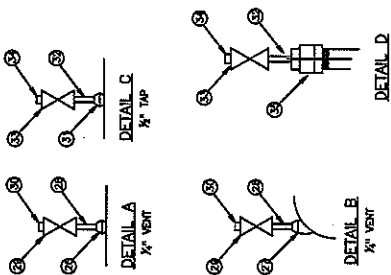


BILL OF MATERIAL FOR PSMS-012

ITEM	QTY	DESCRIPTION
1	2	1/2" PIPE, STEEL, 304, 3000, 3000
2	10	1/2" PIPE, STEEL, 304, 3000, 3000
3	2	1/2" PIPE, STEEL, 304, 3000, 3000
4	2	1/2" PIPE, STEEL, 304, 3000, 3000
5	2	1/2" PIPE, STEEL, 304, 3000, 3000
6	2	1/2" PIPE, STEEL, 304, 3000, 3000
7	2	1/2" PIPE, STEEL, 304, 3000, 3000
8	2	1/2" PIPE, STEEL, 304, 3000, 3000
9	2	1/2" PIPE, STEEL, 304, 3000, 3000
10	2	1/2" PIPE, STEEL, 304, 3000, 3000
11	2	1/2" PIPE, STEEL, 304, 3000, 3000
12	2	1/2" PIPE, STEEL, 304, 3000, 3000
13	2	1/2" PIPE, STEEL, 304, 3000, 3000
14	2	1/2" PIPE, STEEL, 304, 3000, 3000
15	2	1/2" PIPE, STEEL, 304, 3000, 3000
16	2	1/2" PIPE, STEEL, 304, 3000, 3000
17	2	1/2" PIPE, STEEL, 304, 3000, 3000
18	2	1/2" PIPE, STEEL, 304, 3000, 3000
19	2	1/2" PIPE, STEEL, 304, 3000, 3000
20	2	1/2" PIPE, STEEL, 304, 3000, 3000
21	2	1/2" PIPE, STEEL, 304, 3000, 3000
22	2	1/2" PIPE, STEEL, 304, 3000, 3000
23	2	1/2" PIPE, STEEL, 304, 3000, 3000
24	2	1/2" PIPE, STEEL, 304, 3000, 3000
25	2	1/2" PIPE, STEEL, 304, 3000, 3000
26	2	1/2" PIPE, STEEL, 304, 3000, 3000
27	2	1/2" PIPE, STEEL, 304, 3000, 3000
28	2	1/2" PIPE, STEEL, 304, 3000, 3000
29	2	1/2" PIPE, STEEL, 304, 3000, 3000
30	2	1/2" PIPE, STEEL, 304, 3000, 3000
31	2	1/2" PIPE, STEEL, 304, 3000, 3000
32	2	1/2" PIPE, STEEL, 304, 3000, 3000
33	2	1/2" PIPE, STEEL, 304, 3000, 3000
34	2	1/2" PIPE, STEEL, 304, 3000, 3000
35	2	1/2" PIPE, STEEL, 304, 3000, 3000
36	2	1/2" PIPE, STEEL, 304, 3000, 3000
37	2	1/2" PIPE, STEEL, 304, 3000, 3000
38	2	1/2" PIPE, STEEL, 304, 3000, 3000
39	2	1/2" PIPE, STEEL, 304, 3000, 3000
40	2	1/2" PIPE, STEEL, 304, 3000, 3000
41	2	1/2" PIPE, STEEL, 304, 3000, 3000
42	2	1/2" PIPE, STEEL, 304, 3000, 3000



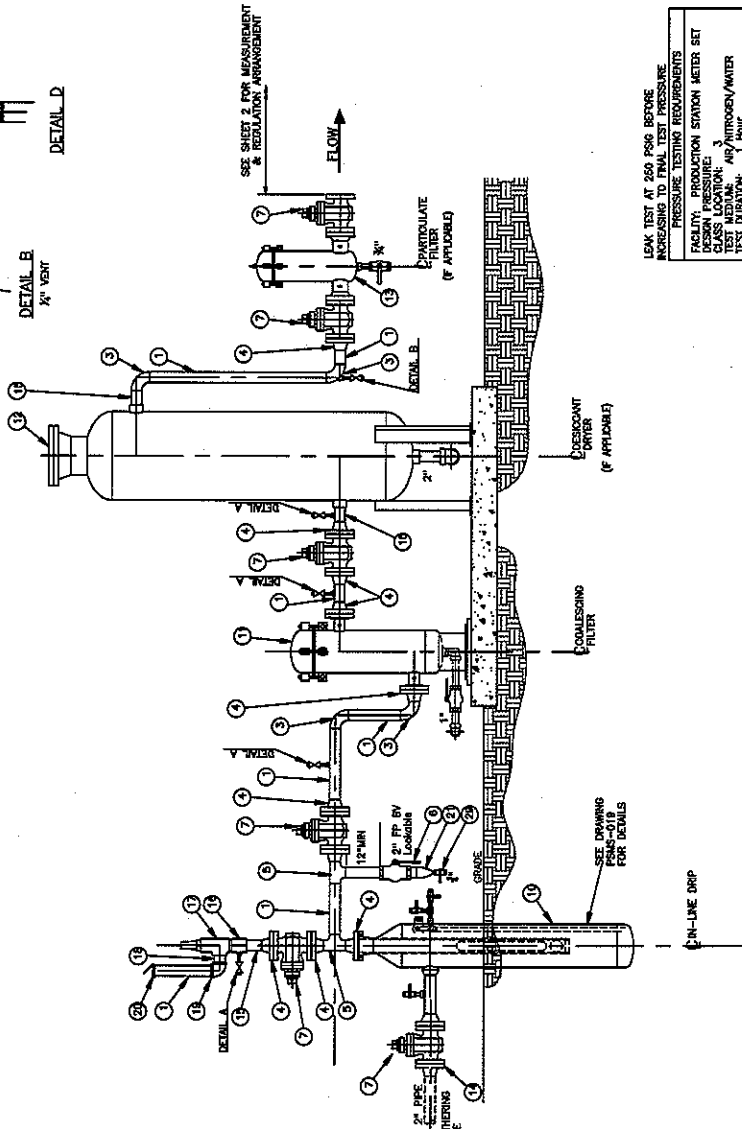
GENERAL NOTES:

1. WELT AND GUNTER TANGERS MUST BE INSULATED
2. WELT AND GUNTER TANGERS TO BE WAPPED IF ABOVE
3. GASKETS WITH DOMINION APPROVED WAFER
4. SUFFICIENT PROVISION DRAWS MUST BE CONSTRUCTED
5. TO PROTECT PRODUCTION MATERIAL SET TO BEHOLD
6. PRODUCTION SET TO BE PRESERVE TESTED PER DOMINION SPECIFICATIONS
7. INSTALL SUFFICIENT PIPE WAGERS AND SUPPORTS
8. WAGON SAFETY COMPANY NORMAL INSTALL
9. NECESSARY TO TEST WAGON WARE REQUIREMENTS
10. WITH INTRODUCTION LOW (SHORT WELLS)

METER	RESISTORS FLAME BORE
MM	3/16"
SM	3/16"

FABRICATION NOTES:

- 1) WELT 1/4" HOLES FOR PRESSURE WPS (TYPICAL)
- 2) WELT 1/4" HOLES FOR 1/2" THERMOWELLS
- 3) THERMOWELLS TO BE CENTERED ON INLET
- 4) ALL FITTING TO FITTING WELDS INCLUDE 1/2" ROOT GAP



LEAK TEST AT 250 PSIG BEFORE
PRESSURE TESTING REQUIREMENTS

PRODUCTION STATION METER SET

CLASSIFICATION: 3

TEST MEDIA: AIR/NITROGEN/WATER

TEST METHOD: 1 HOUR

MAOP: 740 PSIG

MINIMUM TEST PRESSURE: 1110 PSIG

MAXIMUM TEST PRESSURE: 1500 PSIG

WAGON SAFETY COMPANY

DOMINION

PRODUCTION STATION METER SET

2" ASST 350 W/7 ROTARY METER

SCALE: 1"=10' 03/31/05

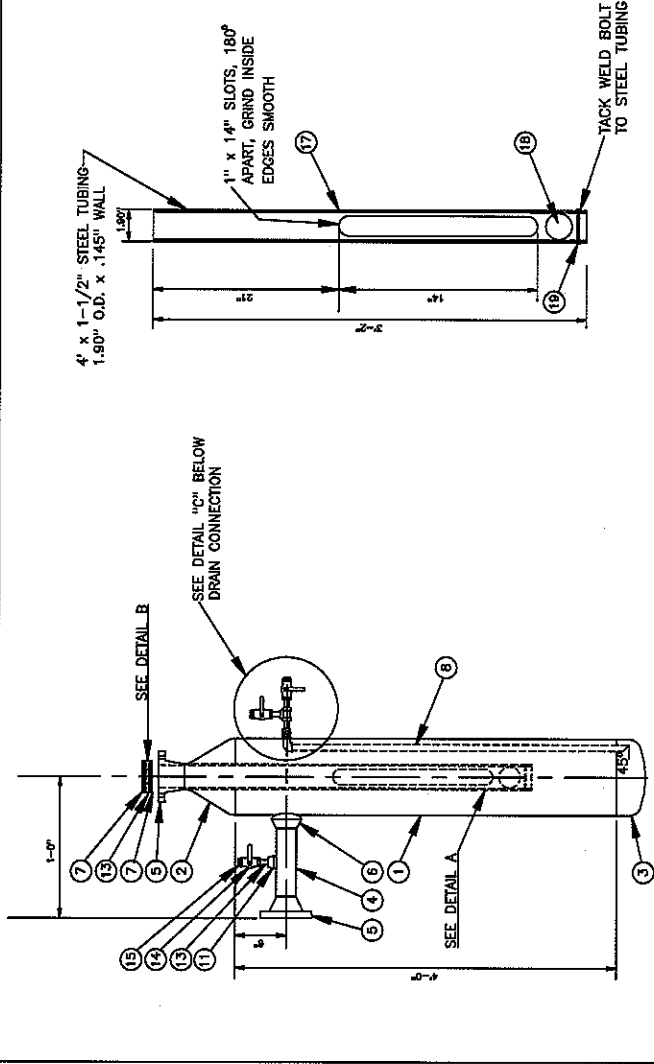
PSMS-012

DATE: 03/31/05

BY: M. G. GARDNER

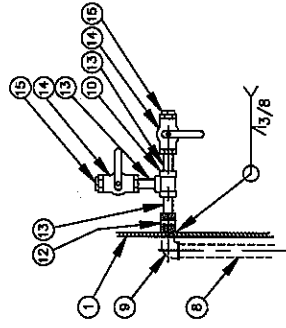
CHKD: J. A. WOOD

Item	Qty	Item Code	Description
1	4	C0555157	6" Sll. Pipe, Sch 40, Gr. B, Seamless, .280W
2	1	C0621131	6"x 2" Reducer, Conc., .280W x .218W, Gr B
3	1	C0127750	6" Cap, Weld, .280W, Gr-B
4	1	NON-STOCK	2" Nipple, 6" Long, Steel, A53, TOE
5	2	C0346850	2" Flange, ANSI 300, WNF, Gr. B, RF, .218W
6	1	C0894391	2" Threadolet, STL, 3000#, SA234WPB, SA105, FITS 6" PIPE
7	2	C0374382	2" Gasket, 1 1/16" Thk, 300 ANSI RF, Non-Asbestos
8	3	C0549357	3/4" Pipe, Steel, Gr. B, Sch 80, 3'-0" Lg., 10E
9	1	C0289648	3/4" Eli. Street, Steel, 90 deg., 3000#
10	1	C0739121	3/4" Tee, Steel, 3000#, SA105
11	1	C0894309	3/4" Threadolet, Steel, 3000#, SA105, Fits 2" Pipe
12	1	C0237926	3/4" Coupling, Full Forged Steel, 6000#, SA105
13	4	C0491535	3/4" Nipple, XH, Seamless, 3" Lg., A106, SMLS, TBE
14	3	C0912990	3/4" Valve, Ball, STEEL, 1500# WOG, W/ WRENCH
15	3	C0589880	3/4" Plug, Steel, 3000#, SO Head, SA105
16	1	NON-STOCK	Valve Seat Plats, Steel (See Detail B)
17	1	NON-STOCK	1-1/2" Ball Float Guide Tube, 1.9" O.D. x .145" W
18	1	NON-STOCK	1-1/2" Float Ball, Polypropylene (1-1/2" Dia.)
19	1	NON-STOCK	5/16" x 2-1/4" Bolt w/ Hex Nut

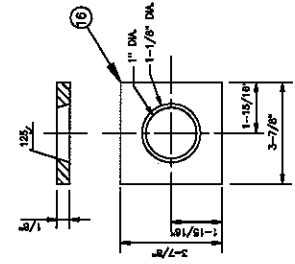


DETAIL A
FLOAT BALL GUIDE TUBE

DRIFT TANK



DETAIL C
DRAIN CONNECTION



DETAIL B
VALVE SEAT PLATE

NOTE: FOR SOCKET WELDS LEAVE 1/16" GAP BETWEEN PIPE & FITTING OR VALVE

NOTE: DESIGNED TO DOT PART 192, ASME CODE STAMP IF REQUIRED BY LOCAL, STATE, OR OTHER JURISDICTION

LEAK TEST AT 200 PSIG BEFORE INCREASING TO FINAL TEST PRESSURE

PRESSURE TESTING REQUIREMENTS	
FACILITY:	6" Drift Tank - ANR 300
DESIGN PRESSURE:	3
TEST MEDIUM:	WATER
TEST DURATION:	1 HOUR
MAP: 740 PSIG, SCS MAP: 740 PSIG	
MINIMUM TEST PRESSURE:	1100 PSIG
MAXIMUM TEST PRESSURE:	1300 PSIG
NOTE:	100% 6" Welds

DOMINION	
PRODUCTION STATION:	METER SET
POSITION:	SHUT-OFF 6" DRIFT TANK
DATE:	08/11/05
SCALE:	1" = 1'-0" (AS SHOWN)
PROJECT NO.:	PSMS-019

THIS DRAWING IS THE PROPERTY OF DOMINION ENERGY. IT IS TO BE USED ONLY FOR THE PROJECT AND LOCATION SPECIFICALLY IDENTIFIED HEREON. IT IS NOT TO BE REPRODUCED, COPIED, OR TRANSMITTED IN ANY FORM OR BY ANY MEANS, ELECTRONIC OR MECHANICAL, INCLUDING PHOTOCOPYING, RECORDING, OR BY ANY INFORMATION STORAGE AND RETRIEVAL SYSTEM, WITHOUT THE WRITTEN PERMISSION OF DOMINION ENERGY.